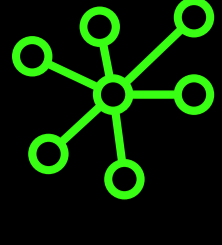


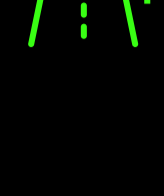
# ANATOMY OF A COMMUNITY



# JACKSON MICHIGAN

## RESIDENTIAL SEGREGATION

Residential segregation in Michigan ranges between 44 and 80

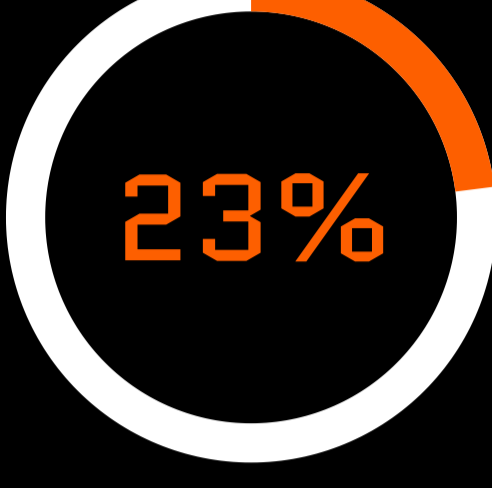


## INCOME INEQUALITY INDEX

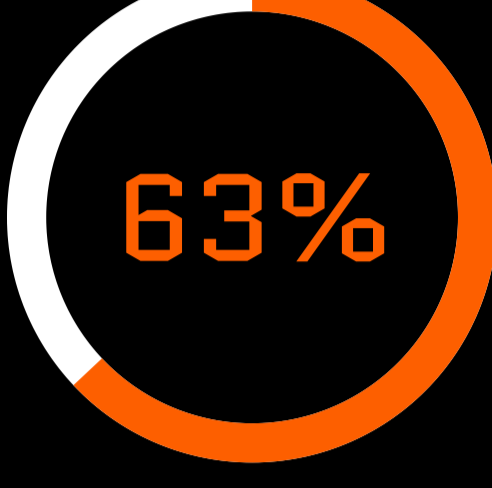
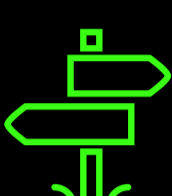
Index ranges between 3.7 and 5.4 for most US counties



## Percent of Children Living in Poverty



WHITE CHILDREN



BLACK CHILDREN



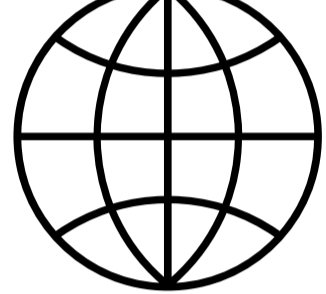
**51%**

Positively Rate the Overall Quality of Life in Jackson County



**54%**

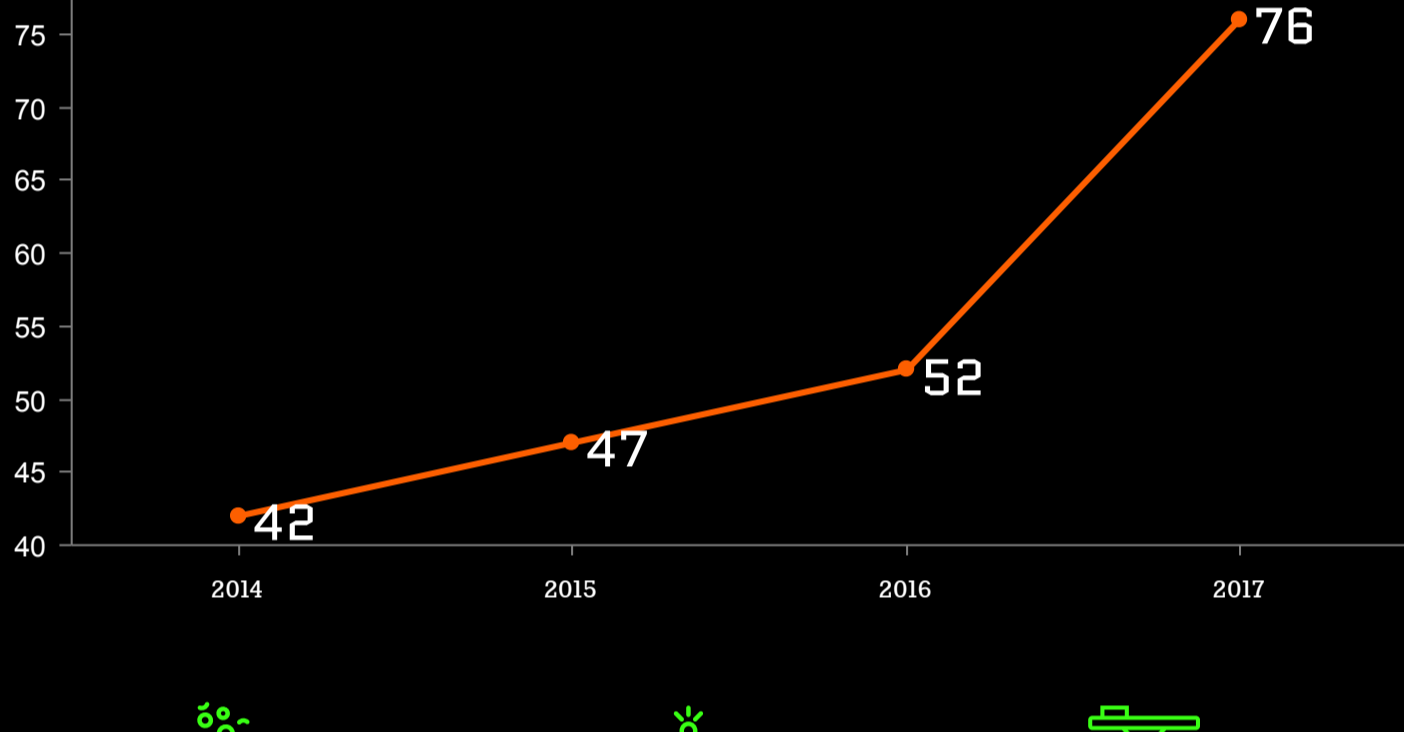
Positively Rate Jackson County as a Place to Live



**47%**

Positively Rate the Overall Appearance of Jackson County

## DRUG RELATED DEATHS



**130**

High school students reported taking prescription drugs not prescribed to them, including painkillers, during the past month



**271**

Opioid-related law enforcement responses in 2017. Up from 164 in 2016



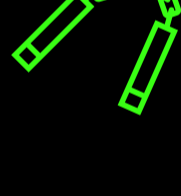
**331**

Emergency department visits due to drug overdose in 2017. Up from 314 in 2016

Jackson County has a violent crime rate of

**382**

offenses per 100,000 population. This is the 10th highest rate among the 83 counties in Michigan.



**19%**

The percent of young adults age 16-24 who are neither working nor in school

**420:1**

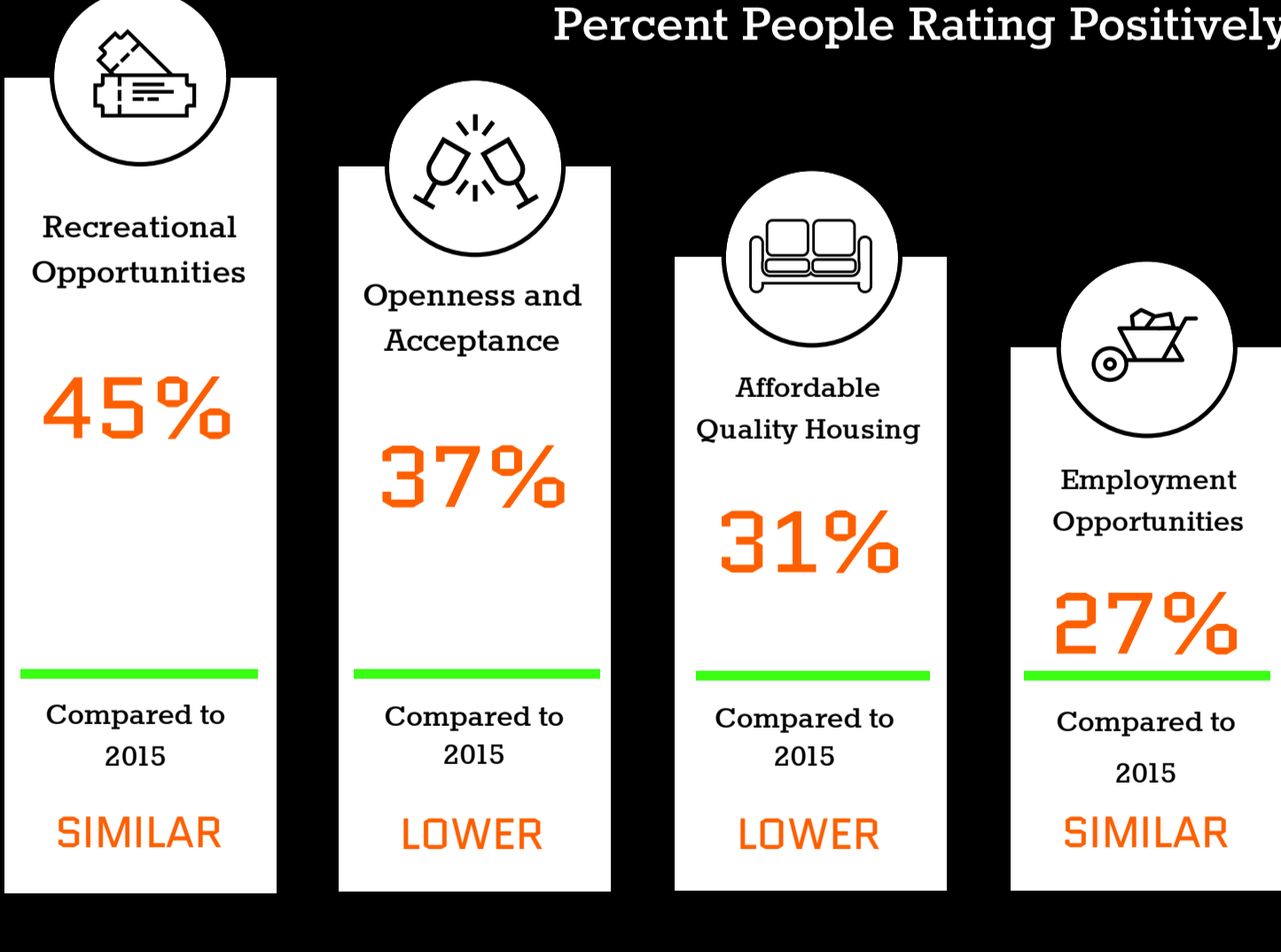
The ratio of population to Mental Health Providers. Ratios in Michigan range from 6,380:1 to 210:1



**17%**

The percent of households with at least one of the following problems: overcrowding, high housing costs, or lack of kitchen or plumbing facilities

## Percent People Rating Positively



## REGISTERED VOTERS

**112,920**

Average registered voters in Jackson County for the August primary elections between 2010 and 2018

## VOTER TURNOUT

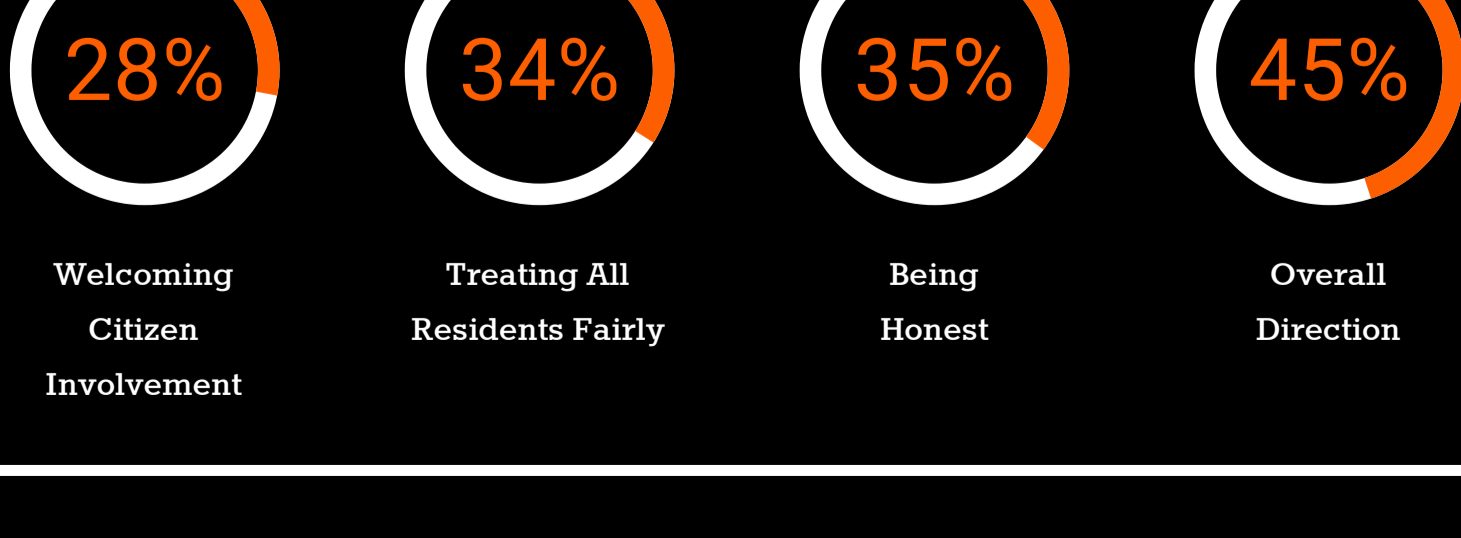
2018 August Primary Election: Percent based on the number of cards cast and the number of registered voters

**30%**



## GOVERNMENT PERFORMANCE

Percent People Rating Positively



*Equity*  
*Authentic Engagement*  
*Continuous Learning*